

research fellowships



Science Faculty (/web/science-faculty) » Research Fellowship

SCIENCE & EXPLORATION

(https://www.esa.int/Science_Exploration)

(<https://www.esa.int>)

/Science_Exploration)

RESEARCH FELLOWSHIPS IN SPACE SCIENCES & EXPLORATION

Join us at the forefront of unveiling the mysteries of our Solar System and the Universe!

ESA's postdoctoral Research Fellowship (https://www.esa.int/About_Us/Careers_at_ESA/Post_Docs_Research_Fellowship) programme offers young scientists and engineers the possibility to carry out research in a variety of disciplines related to space science, space applications or space technology.

Research Fellowships in Space Science & Exploration specifically offer the opportunity to contribute to ESA's endeavour to explore our Solar System and the Universe in the fields of human and robotic exploration, heliophysics, planetary science, astrophysics and fundamental physics.

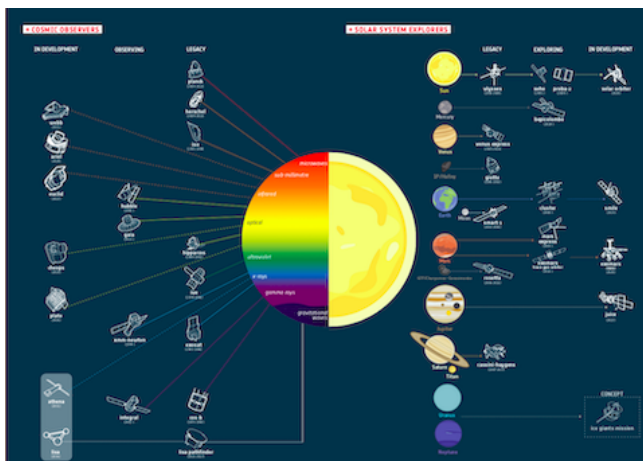
APPLICATIONS FOR 2020 ARE NOW OPEN

Application deadline: **30 October 2020**

ESA'S FLEET OF SPACE SCIENCE MISSIONS

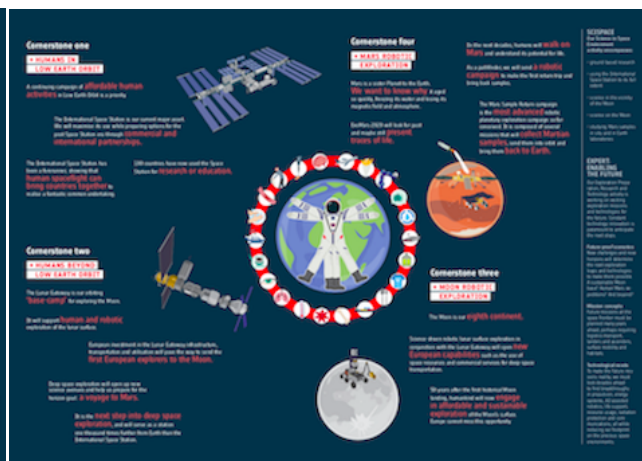
**ESA'S HUMAN AND ROBOTIC EXPLORATION
PROGRAMME**

ESA'S FLEET OF SPACE SCIENCE MISSIONS



(https://esamultimedia.esa.int/docs/corporate/Space19+flyers_SCI_LR.pdf)

ESA'S HUMAN AND ROBOTIC EXPLORATION PROGRAMME



(https://esamultimedia.esa.int/docs/corporate/Space19+flyers_HRE_LR.pdf)

Read more ... (https://esamultimedia.esa.int/docs/corporate/Space19+flyers_SCI_LR.pdf)

Read more ... (https://esamultimedia.esa.int/docs/corporate/Space19+flyers_HRE_LR.pdf)

COLLAPSE ALL

✓ WHAT ARE THE SPACE SCIENCE AND EXPLORATION FELLOWSHIPS?

ESA's postdoctoral Research Fellowship programme offers young scientists and engineers the possibility to carry out research in a variety of disciplines related to space science, space applications or space technology.

Research Fellowships in Space Science & Exploration specifically offer the opportunity to contribute to ESA's endeavour to explore our Solar System and the Universe in the fields of human and robotic exploration, heliophysics, planetary science, astrophysics and fundamental physics.

Research Fellows also help foster a lively scientific environment in the directorate, inspiring ESA scientists to get involved in new scientific activities. The Research Fellowship programme nurtures and strengthens the links between ESA and the scientific communities in the Member States.

Approximately 9 ESA Fellowships in Space Science and 9 in Human and Robotic Exploration will be offered this year, to join the pool of about 30 research fellows in the two Directorates (Science and Human and Robotic Exploration).

Duration: Appointments for an ESA Research Fellowship are initially for two years, with a third year extension frequently granted.

Location: Research Fellowship in Human and Robotic Exploration are located at

- European Space Research and Technology Centre (ESTEC) (http://www.esa.int/About_Us/ESTEC) in Noordwijk, the Netherlands
- European Centre for Space Applications and Telecommunications (ECSAT) (https://www.esa.int/About_Us/Corporate_news/ECSAT) in Harwell, United Kingdom
- European Astronaut Centre (EAC) (http://www.esa.int/About_Us/EAC) in Köln, Germany

Research Fellowships in Space Science can be taken at any of three locations:

- European Space Astronomy Centre (ESAC) (http://www.esa.int/About_Us/ESAC) in Villafranca del Castillo near Madrid, Spain
- European Space Research and Technology Centre (ESTEC) (http://www.esa.int/About_Us/ESTEC) in Noordwijk, the Netherlands
- The ESA office at Space Telescope Science Institute (STScI) (<https://www.stsci.edu/>) in Baltimore, Maryland, USA

✓ WHAT ARE THE RESEARCH OPPORTUNITIES?

The Space Science and Human and Robotic Exploration Programmes offer a wide diversity of exciting space research activities and opportunities.

This year, the **Directorate for Human and Robotic Exploration** is interested in research fellows working on various specific projects with brief descriptions under:

<https://www.cosmos.esa.int/web/science-faculty/hre> (<https://www.cosmos.esa.int/web/science-faculty/hre>)

These fellowships are offered at ESTEC, EAC or ECSAT.

Within the **Science Directorate**, we are welcoming all proposals for innovative research associated with one or more of our missions. These fellowships can be taken at any of the three sites ESAC, ESTEC or STScI.

To learn more about the research conducted by the ESA scientists, please visit space science research activities (<https://www.cosmos.esa.int/web/science-faculty/people>).

For science groups by site, please see the pages for:

- ESAC (<https://www.cosmos.esa.int/web/esac-science-faculty/faculty-science>)
- ESTEC (<https://www.cosmos.esa.int/web/estec-science-faculty/estec-research-areas>) (See also the list of active scientists (<http://www.cosmos.esa.int/web/estec-science-faculty/estec-science-activities>))
- ESA Office at STScI (<https://www.cosmos.esa.int/web/esac-science-faculty/esa-science-stsci>) (See also the research of non-ESA scientists at STScI (<https://www.stsci.edu/stsci-research>))

✓ WHO CAN APPLY

Applications are only considered from nationals of one of the following States: Austria, Belgium, the Czech Republic, Denmark, Estonia, Finland, France, Germany, Greece, Hungary, Ireland, Italy, Luxembourg, the Netherlands, Norway, Poland, Portugal, Romania, Spain, Sweden, Switzerland, and the United Kingdom. Nationals from Slovenia, as an Associate Member, or Canada as a Cooperating State, can apply as well as those from Bulgaria, Cyprus, Latvia, Lithuania and Slovakia as European Cooperating States (ECS).

According to the ESA Convention the recruitment of staff must take into account an adequate distribution of posts among nationals of the ESA Member States. When inviting for an interview, strong preference will be given to candidates from under-represented members states in the green or yellow rows in <http://esamultimedia.esa.int/docs/careers/NationalityTargets.pdf> (<http://esamultimedia.esa.int/docs/careers/NationalityTargets.pdf>).

Applicants should have recently completed, or be close to completing their PhD in a technical or scientific discipline. Preference will be given to applications submitted by candidates within five years of receiving their PhD.

ESA is an equal opportunity employer, committed to achieving diversity within the workforce and creating an inclusive working environment.

Applications from female scientists are especially encouraged.

✓ HOW TO APPLY

In the Science Directorate:

There is a single opening for all 9 positions. To apply, please visit the Official ESA Vacancy Notice (https://career2.successfactors.eu/portalcareer?career%5fns=job%5fposting&company=esa&navBarLevel=JOB%5fSEARCH&rcm%5fsite%5flocale=en%5fGB&career_job_req_id=10705&selected_lang=en_GB&jobAlertController_jobAlertId=&jobAlertController_jobAlertName=&_s.crb=R43H94rjcSOXJbdAKNJHLY0VXY8vrXhoOD0mFYdK9zE%3d) (please click on text to be redirected).

In Human and Robotic Exploration Directorate

For each project, there is a separate Vacancy Notice.

The respective link to the application form can be found in the list of HRE Project Descriptions. (<https://www.cosmos.esa.int/web/science-faculty/hre>)

All ESA vacancy notices can be seen under: <https://career2.successfactors.eu/career?company=esa> (<https://career2.successfactors.eu/career?company=esa>).

Required application Materials:

Three documents will need to be uploaded:

- A Cover/Motivation letter;
- Your CV (including a list of publications and other accomplishments);
- A research proposal (4 pages max. plus optionally 1 page for figures and tables, minimum font size 11pt). It is expected to include sections outlining (1) the research rationale, (2) impact and past achievements, (3) future research plans, (4) synergies with mission-related activities at ESA.

Further information useful to be prepared for the online application form are the contact information of three references and, **for Space Science**: a prioritised list of one or more establishments that you would like to join (ESAC, ESTEC, or STScI).

The review committee will consist of members with diverse areas of expertise. Therefore the application should be written for a general audience of space scientists. The application will be evaluated with respect to scientific excellence of the candidate (past achievements), proposed research at ESA (feasibility, future impact), and synergies with existing ESA research activities at the selected site. See also Further Questions, Tips and Hints (<https://www.cosmos.esa.int/web/science-faculty/rf/faq>)

✓ WHAT HAPPENS AFTER THE APPLICATION HAS BEEN RECEIVED

Inquiries regarding the application process can be sent at any time to the fellowship coordinators (<http://www.cosmos.esa.int/web/science-faculty/rf/mailform>).

Long-listed candidates will be contacted **by the end of November** to produce a video (answering pre-formulated questions). The concept is explained at <https://www.sonru.com/> (<http://www.sonru.com/>), and tips on how to produce this video (<http://www.sonru.com/blog/how-to-prepare-for-your-next-video-interview/>) are also provided.

Short-listed candidates will be invited to an online video interview taking place in **January 2021**.

Offers are expected to be made starting **end of January 2021**.

✓ RESEARCH BUDGET, CONFERENCE ATTENDANCE, OTHER OPPORTUNITIES

The research expenses for ESA Research Fellows are generously covered by their department's budgets. This includes publication charges, attendance of conferences, participation in observing campaigns and/or research visits, etc

Science Visitor Programme: Research Fellows also have access to the Science Visitor Programme, funded by the ESA Faculty, allowing invitation of external collaborators to the ESA sites.

Student/trainee supervision: Research Fellows have various opportunities to request funding for and/or supervise undergraduate or masters-level student trainees.

Additional research funding Fellows are encouraged to join existing research activities, as well as initiate new collaborations with all Faculty members (<https://www.cosmos.esa.int/web/science-faculty/people>). As faculty members, fellows are eligible to request funding through the faculty for activities requiring substantial additional funding (e.g. for hardware, organisation of conferences and workshops, etc.).

Mentor Programme As postdoctoral early-career researchers, we expect ESA Fellows to be more in need of guidance than supervision. New fellows are invited to select a main mentor who will guide and support with general issues not necessarily related to the direct research field. Mentors are especially meant to support fellows with their future orientation and job search. Some aspects about the role of mentors can be found in this article <https://www.sciencemag.org/careers/2012/02/mentoring-advice> (<https://www.sciencemag.org/careers/2012/02/mentoring-advice>).

✓ CONDITIONS AND BENEFITS

For terms and conditions we refer to the General Description (https://www.esa.int/About_Us/Careers_at_ESA/Post_Docs_Research_Fellowship)
Health coverage under ESA's social security scheme includes medical expenses, invalidity and death benefits. However, pension benefits need to be arranged separately.

Research Fellows working at STScI (Baltimore, USA) will be issued a G4 visa (<https://travel.state.gov/content/travel/en/us-visas/other-visa-categories/visa-employees-nato.html>).

FELLOWSHIP FAQ (/WEB/SCIENCE-FACULTY/RF/FAQ)

CONTACT

For further inquiries, feel free to contact the fellowship coordinators (<http://www.cosmos.esa.int/web/science-faculty/rf/mailform>).

All members of the ESA faculty in SCI are listed: <https://www.cosmos.esa.int/web/science-faculty/people> (<https://www.cosmos.esa.int/web/science-faculty/people>)

To contact any person by email, please use the address given in their profile page, or use:

firstname.lastname@esa.int

Current fellows in SCI can be found under:

<https://www.cosmos.esa.int/web/esac-science-faculty/research-fellows> (<https://www.cosmos.esa.int/web/esac-science-faculty/research-fellows>)

and

<https://www.cosmos.esa.int/web/estec-science-faculty/research-fellows> (<https://www.cosmos.esa.int/web/estec-science-faculty/research-fellows>)

They will be happy to share any experience with you.